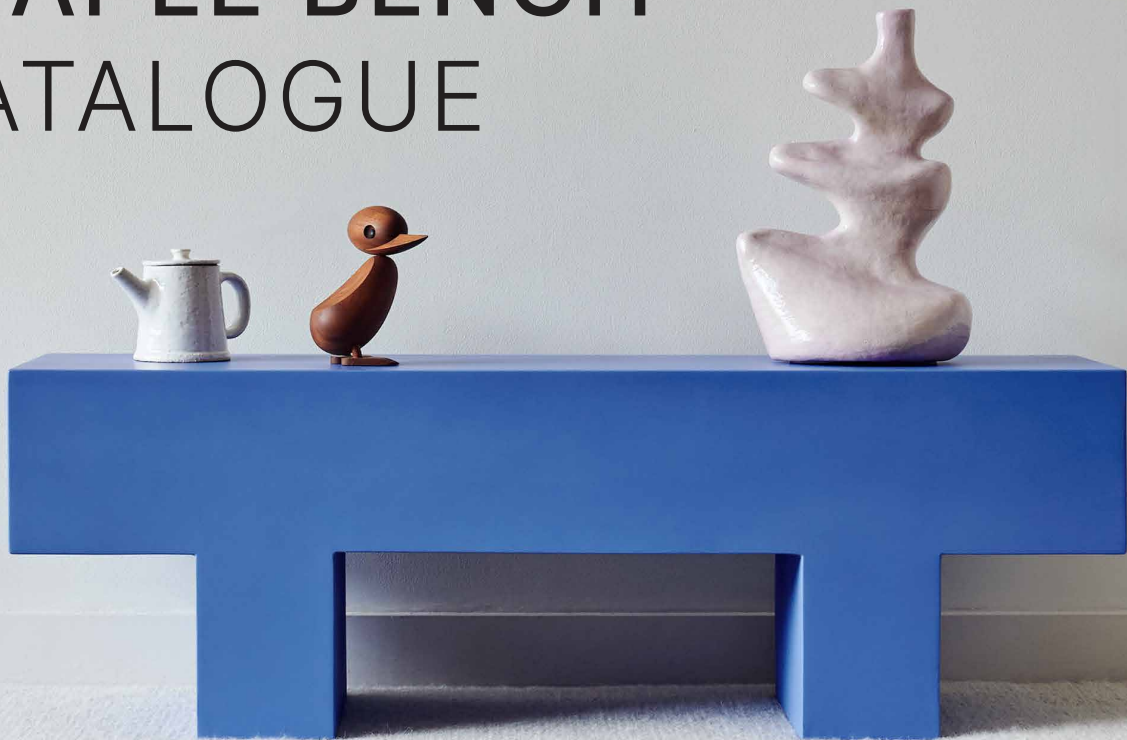




THE STAPLE BENCH CATALOGUE



ABOUT THE STAPLE BENCH

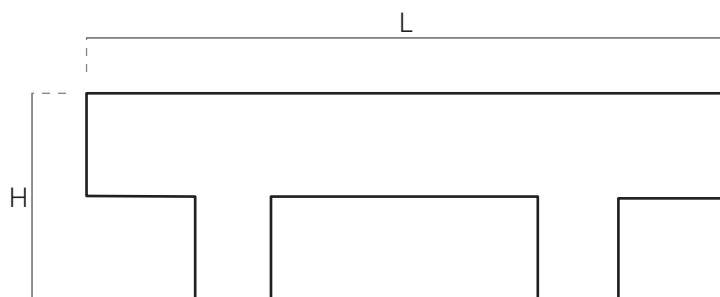
Named after the trusty staple that keeps your paperwork together, the Staple bench is a great all rounder: light enough to be picked up by one person, but sturdy enough to comfortably seat two. Ideal for entrance halls, lounges or at the foot of your bed! Use the Staple bench to display your favourite items, keep books or your bags - it even works as a great space for a light!



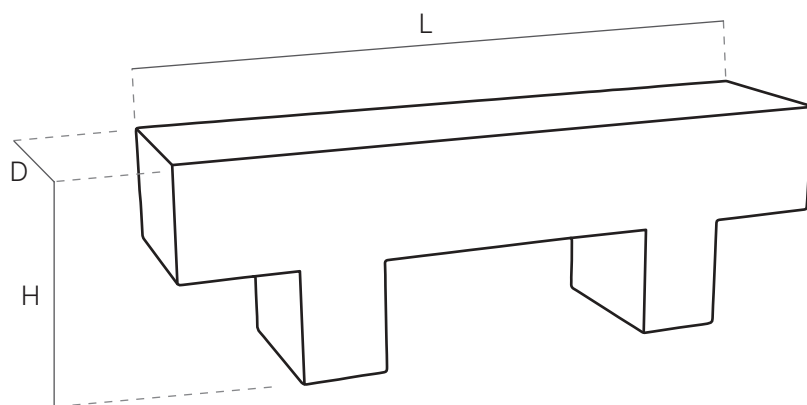
The Staple Bench in powder blue, Paradise Light & Curvy rug all by Arrange Studio. Image credits - Photographer: Frances Marais. Styling & art direction: Sanri Pienaar.

THE SIZE

Our Staple bench comes in **one size**, and fits any space.



Length: 1200mm
Depth: 300mm
Height: 400mm



MATERIALS

Each bench is made by hand and consists of a **sprayed MDF** structure with height adjustable feet.

Proudly manufactured in South Africa.



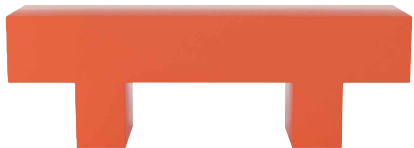
Powder blue Staple bench as seen in House & Leisure. Photographer: Michael Oliver Love. Production & Styling: Storm Ross. Art direction & Styling: Charl Edwards. Produced by LOOKBOOK Studio.

AVAILABLE COLOURS

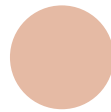
The Staple benches are available in five colours. To minimise waste & maximise efficiency, the first production run will be the powder blue colour. The other colours will follow thereafter, but pre-orders are already open for all colours! As soon as a quantity of 5 or more are received for any colour, their production can commence!



Powder blue



Terracotta



Champagne



Lilac



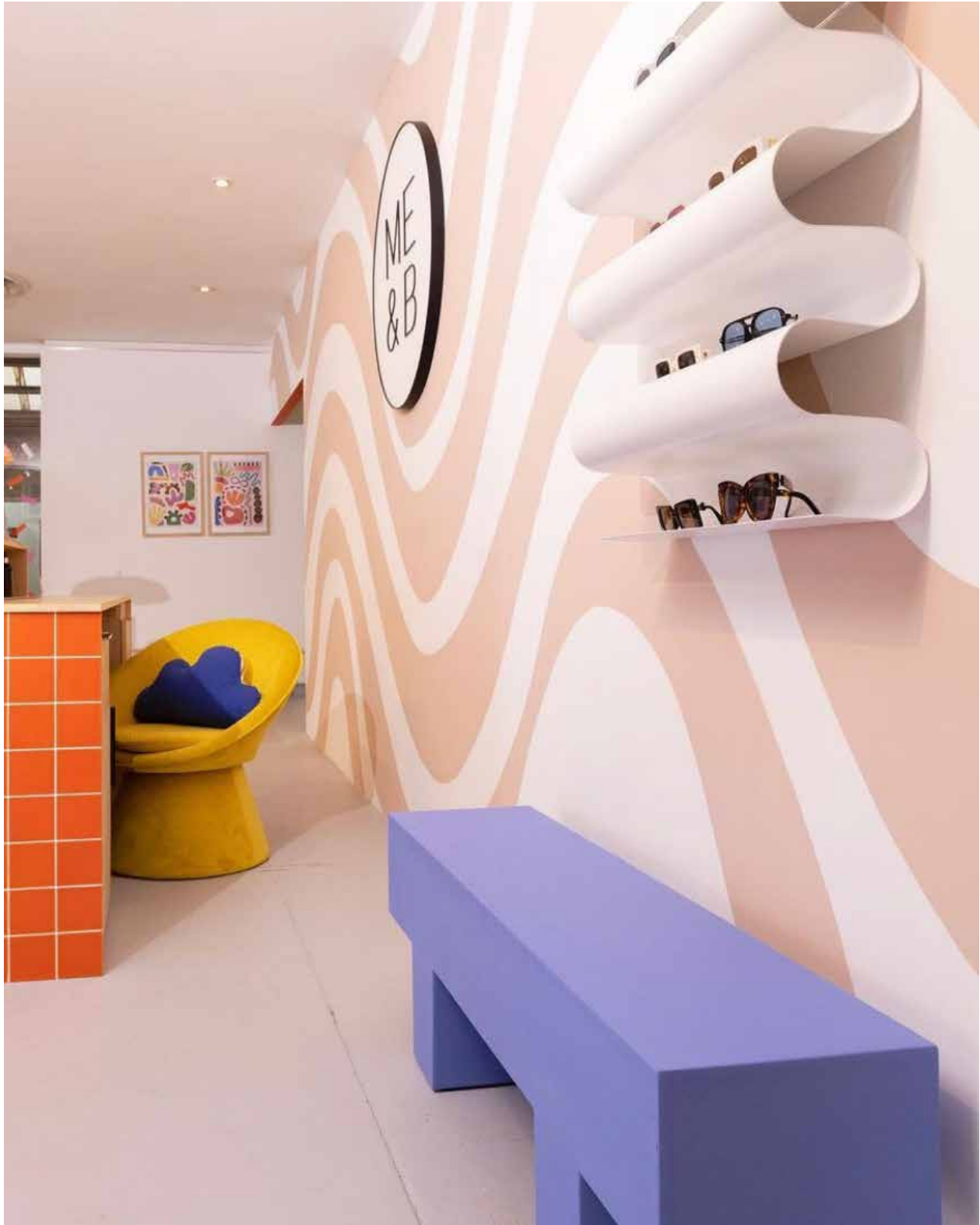
Lime

THE PRICE

R4950 per bench. Currently only able to offer delivery to Cape Town - & Gauteng areas.

LEAD TIME & HOW TO ORDER

Approx. 3 – 4 weeks. Each bench is made to order, except when there might be stock available after a small batch run.



Powder Blue Staple bench in the Me & B store Cape Town. Photographer: PJ Kotze



Follow @arrange_studio on Instagram for more.

www.arrangestudio.co.za

ARRANGE
STUDIO